

OKAKA ANGUS



2-YR BULL SALE
13TH JUNE 2024, 1PM

Bull sale venue
Papanui Junction School Hall
7471 Turakina Valley Rd
Papanui Junction, Taihape



On-farm and online
Helmsman auction

Sale Location at

**OKAKA
ANGUS**

West To
Ohakune



Tangiwai
40mins to Papanui



Waioru



Rangiwaia

Mataroa
School

Colliers Jn

Taihape
40 mins to
Papanui



Rongoiti Jn

Koeke Jn

Okaka Homestead
OPEN DAY
361 Okaka Rd



Papanui
Junction
School & Hall
SALE VENUE

7471 Turakina Valley Rd
Papanui Junction 4791



Otairi

Hunterville
40 mins to
Papanui

KEY

Turakina River



South to
Bulls &
Wellington

DRIVING TIMES

40mins/ 31km from Taihape

1hr 11min/ 77km from Ohakune

1hr 24min/ 77km from Bulls

OKAKA ANGUS

4TH ANNUAL 2-YR BULL SALE ON-LINE AND ON-FARM

BULL SALE VENUE

Papanui Junction School Hall
7471 Turakina Valley Road, Papanui Junction, Taihape



ON-LINE bidding

opens on

Sunday 9th June - 7pm

www.yourbid.co.nz

Paddock Inspection Invited at Anytime

Contact Paul & Susannah Revell

Ph: 06 388 7519

E: paulandsus@inspire.net.nz

BOOKING AGENT: Carrfields

STOCK AGENTS:

Stephen Harris Livestock Ltd

Stephen Harris 0274 423 546

Mark Anderson 0274 691 004

Blair Robinson 0274 855 356

Central Livestock Ltd

Nick McGuinn 021 296 1825

Carrfields

Dan Warner 027 826 5768

NZ Farmers Livestock Ltd

John Watson 027 494 1975

Brent Bougen 027 210 4698

REBATE COMMISSION

A purchasing rebate of 6% will then be paid to non-participating livestock companies and recognised independent livestock agents with approved credit facilities introducing and/or accompanying buyers to the sale. Arrangements must be made prior to the sale and settlement made on the purchaser's behalf within 14 days.

DISCLAIMER

EBV's have been calculated by TransTasman Angus Cattle Evaluation from the raw data supplied by Angus Breeders Society members. Angus Breeders Society of New Zealand Inc. does not oversee or audit the collection of this data. No responsibility is accepted by the Angus Cattle Breeders Society of New Zealand Inc. or the vendor for the use or interpretation of information on the animals included in this catalogue.

FOREWORD

In 2024 we are proud to present 17 quiet, moderate and meaty Angus bulls at our fourth annual Angus 2yr bull sale. Any of these bulls we would use in our commercial herd on our steep hill country. Features of this sale are the three sons of Kaharau Q430 lots 1 to 3; the solid, compact bulls from Pinebank P80, Resurgam F3180 and Meadowslea Q347; and the several ideal heifer mating bulls. All bulls have been semen tested and physically checked by Taihape Vets, and structurally assessed by John Hammond of Ruaview Angus, Ohakune.

Currently the herd is 100 registered cows, with 40% of these being pure New Zealand genetics. The base of the Okaka Stud has been formed with the purchase of females from the Waitawheta Stud of Alistair and Pat Sharpe, the Meadowslea Stud of David Giddings, the Red Oak Stud of Richard Orr, and cows from many dispersal sales (including 4 cows from the Atahua dispersal). Although we have a mob of bigger cows to produce some bigger bulls, the main drive is for moderate cows who cope with the job of tidying up the hills the best. Ultrasound and DNA technology, including i50k and sire trace, are also used to help select stock and provide info on unseen qualities.

The property, at Papanui Junction, Taihape is a total of 565ha (540ha effective) and consists of 350ha steep hill country, 80ha easy hill country and about 110ha cultivatable country - a nice breeding balance. Other stock on Okaka are a herd of 40 commercial cows, and 2500 Romney ewes (including two-tooths) and their replacements.



Bulls will be sold via the Yourbid online helmsmen auction system, given its success in the past. Buyers enjoyed having the time and space to make a good decision on which bull was appropriate for them. Thank you to the Giddings family who created this efficient system for selling bulls. The sale will climax on Thursday 13th June from 1pm at Papanui Junction Hall. Buyers can come on the day, see the bulls, and bid at the sale site, or if unable to make it, can come and see the bulls before the sale day (open day Mon 27th May) and then bid on-line from home on the day.

Thank you to all the people that have contributed to Okaka Angus and the line of bulls presented on the 13th June 2024.

PAUL & SUSANNAH REVELL

- Okaka Angus is on Facebook or phone 06 388 7519.
- You are welcome to come and view bulls at any time up to the sale.
- There will also be videos of the bulls on line at **yourbid.co.nz**.

**OKAKA
ANGUS**





ON-LINE bidding

opens on

THURSDAY 8TH JUNE - 7PM

www.yourbid.co.nz

SALE FORMAT

The sale will be conducted as a Helmsman-style auction, meaning that all lots are for sale simultaneously. This is to allow for the participation of those in attendance, as well as those online.

The sale will be hosted on the yourbid platform and accessed through the website **www.yourbid.co.nz**.

Prior to the sale, all lots will be filmed and available for viewing on the Yourbid website.

Registration for those in attendance will be at the on-farm office, where a copy of the conditions of sale will be posted.

Registration for those online will be through the Yourbid website, where the conditions of sale will also be available.

Buyers will receive a buyer number as they register which will accompany each bid they place, whether they do so at home on their computer, or through their smart phone, or manually while in attendance.

Those in attendance may also bid by writing on the supplied bidding cards and handing them in to the auctioneers. All live bids and all lots will be visible at all times, both online and on a big screen on-farm.

Online registration is available NOW and we encourage everyone to visit our website **www.yourbid.co.nz**, to register, and then place practice bids on the demonstration lots on the auction page.

An online video of each bull in the catalogue will be available for viewing by Friday 31st May (if not earlier) and right through to sale day. These videos will be released on our website and on the "Okaka Angus" facebook page once they are available.

Online bidding will be open from **Sunday 9th June – 7pm** until the conclusion of the sale.

On Sale Day, **June 13th**, the on-farm registration and bidding will open at **11am**.

Updates on state of sale and likely finish will be made through the comments section of the web-site chat room.

A live screen on the website will show all lots alongside their current prices and the buyer number of the bidder who holds that lot.

Bids will be displayed on a computer or smart phone screen in the following colours: A live screen on the website will show all lots alongside their current prices and the buyer number of the bidder who holds that lot.

On-farm attendees will be able to view on a big screen on site.

Bids will be displayed on screen in the following colours

EXAMPLE:

\$2500 Displayed in Red denotes the Vendor's reserve and indicates there has been no bid

\$3000 Displayed in Blue means an active bid has been received

\$3500 Orange highlight indicates a new Bid has been received within the last 2 minutes on this lot

\$3500 The holder of the leading bid will have the lot number highlighted in green on their computer or their smart phone

The sale will run until **1.30pm, 15th June 2022**. After this time the sale will conclude once there has been a period of at least 2 minutes without a bid being received on any lot. If another bid is placed on any lot during the 2-minute period, then time is extended and bids can be received on all lots for a further 2 minutes.

This process will be repeated until a clear 2 minutes passes without any bids on any lot at which time the sale will conclude.

Final Time will be called clearly by the commentary team who will use their discretion to ensure all bidders are satisfied.

All updates will be posted on the website, as will an up-to-date version of this document.

REBATE PURCHASING COMMISSION

Carrfields is the booking company and will be responsible for booking bull purchases.

1. 6% rebate commission paid to the nominated buying company, provided the vendor is advised of the purchaser's intention to buy prior to the commencement of the on-farm sale, or before the purchaser commences bidding online.
2. 3% rebate commission paid to the nominated buying company when the vendor has NOT been advised of the purchaser's intention to buy prior to the commencement of the on-farm sale, or before the purchaser commences bidding online.



Taihape & Ruapehu **VETERINARY** Services

2nd May 2024

The bulls presented for sale by Paul & Susanna Revell, Okaka Stud, have all passed the following:

- Scrotal palpation
- Penis examination
- Mating ability
- Semen morphology & motility

These bulls were great to work with during the above testing, a testament to their good temperament. All bulls are BVD antigen negative. They are also vaccinated against BVD and Leptospirosis and will have received their annual vaccine booster shots prior to the sale.

Anthony Oswald BVSc



Taihape & Ruapehu **VETERINARY** — Services —

**Proud to be associated with
Paul & Susannah Revell.**

We congratulate them on the
quality of the line of bulls they
have put up for sale.



We pride ourselves on affordable, high quality
care for your livestock, working dogs and pets.

Taihape Veterinary Services

Kotare Street

Taihape, Rangitikei 4720

P: 06 388 0863

E: taihapevets@xtra.co.nz

Ruapehu Veterinary Services

100 Seddon Street, Raetihi,

Manawatu-Wanganui 4632

P: 06 385 4611

E: clinic@ruapehuvetservices.co.nz

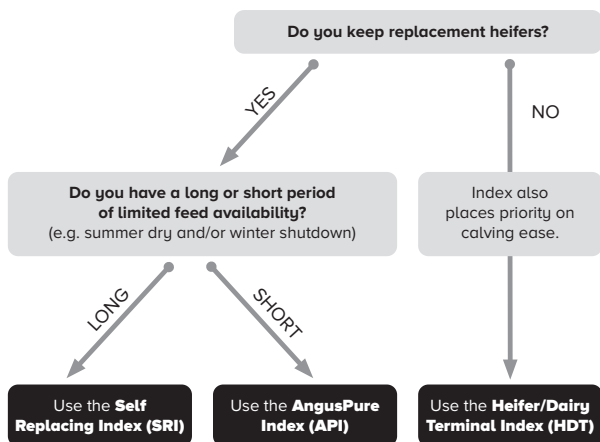
ANGUS NZ EBV's Explained

TransTasman Angus Cattle Evaluation (TACE) EBVs and selection indexes remove the effects of non-genetic factors (e.g. feeding regimes, animal age) from what is seen and measured to provide the best measure of an animal's genetic merit. BREEDPLAN information should always be used in conjunction with other selection criteria, including visual assessment.

A BEST PRACTICE GUIDE TO SELECTING YOUR NEXT NEW ZEALAND ANGUS SIRE

A **TACE Guide to Animal Selection** allows you to select the best genetics for your herd in four easy steps:

Which New Zealand Angus Selection Index should you use?



1. Consider the individual EBVs of importance.
2. Consider other traits of importance (e.g. visual assessment).
3. Identify the **Angus New Zealand selection** index of most relevance to you.
4. **Rank animals** using the chosen selection index.

The majority of these steps can be undertaken online, allowing you to generate a shortlist of bulls for potential purchase ahead of sale day. The searchable version of this catalogue can be found online here www.angusnz.com.

TRANTASMAN ANGUS CATTLE EVALUATION

A TACE Guide to Interpreting EBVs outlines how to assess and compare the genetic merit of animals. Please note that only EBVs from the same TACE analysis can be directly compared. The New Zealand Angus Association publishes the following TACE EBVs:

Calving Ease Direct (%): Higher (or more positive) CEDir EBVs indicate that two year old heifers will have less difficulty when calving this sire's progeny.

Calving Ease Daughters (%): Higher (or more positive) CEDtr EBVs indicate easier calving of this sire's daughters at two years of age.

Gestation Length (days): Bulls with lower (or more negative) GL EBVs are expected to produce progeny with shorter gestation lengths. Such progeny are also expected to be easier calving.

Birth Weight (kg): Bulls with lower, less positive BWt EBVs are expected to produce progeny that are lighter at birth, with an associated lower risk of calving difficulty. This EBV is particularly important when selecting sires where there is an increased risk of calving difficulty (e.g. heifers, cross-breeding).

200, 400 & 600 Day Weight EBVs (kg): Bulls with larger (or more positive) Weight EBVs are expected to produce progeny that grow faster to 200, 400 & 600 days of age, respectively. The Weight EBV of particular importance will depend on the target market e.g. vealer (200 D), yearling (400 D) or heavy steer (600 D).

Mature Cow Weight (kg): Bulls with larger (or more positive) MCW EBVs are expected to produce daughters with higher mature cow weights and increased feed requirements. More moderate MCW EBVs are generally more favourable in self replacing or maternal production systems.

Milk (kg): Bulls with higher (or more positive) Milk EBVs are expected to produce daughters with more maternal ability leading to higher 200 day weights in their progeny. Selection for moderate Milk EBVs may be preferable in harsher environments as cows with higher Milk EBVs can have impaired fertility and decreased survival under such conditions.

Scrotal Size (cm): Bulls with larger (or more positive) SS EBVs indicate better semen quality and quantity. Daughters are expected to be more fertile and reach puberty at an earlier age.

Days to Calving (days): Bulls with lower (or more negative) DTC EBVs are expected to produce daughters

that are more fertile and have a shorter interval from bull-in date to calving.

Carcase Weight (kg): Bulls with larger (or more positive) CWt EBVs are expected to produce progeny with heavier carcase weights.

Eye Muscle Area (sq. cm): Bulls with a higher (or more positive) EMA EBV are expected to produce progeny with better muscling.

Rib and Rump Fat EBVs (mm): Bulls with higher (or more positive) Rib & Rump Fat EBVs are expected to produce fatter progeny, relative to carcase weight. The desire for more or less fat will depend on the finishing ability of your animals.

Retail Beef Yield (%): Bulls with higher (or more positive) RBY EBVs are expected to produce progeny with higher yielding carcasses.

Intramuscular Fat (%): Bulls with higher (or more positive) IMF EBVs are expected to produce progeny with more marbling and better grading scores (e.g. MSA).

Docility (%): Bulls with higher (or more positive) DOC EBVs are expected to produce more progeny with acceptable temperament.



For more information on **using and understanding TACE EBVs & information**, including the BREEDPLAN Guides, scan the QR code.

<https://breedplan.une.edu.au/media/dtqpdm34/using-and-understanding-breedplan-ebvs.pdf>

SELECTION INDEXES



The New Zealand Angus Association currently reports three different selection indexes. These are the:

- Self Replacing Index
- AngusPure Index
- Heifer/Dairy Terminal Index

Each selection index is reported in units of net profitability per cow mated (\$), and relates to a commercial herd using Angus bulls. Each selection index is focused on efficient beef production, including maternal traits where appropriate. Scan the QR Code for more detail.

<https://breedplan.une.edu.au/media/bqjbnnbh/using-new-zealand-angus-selection-indexes.pdf>



COVERING YOUR STUD STOCK NEEDS NATIONWIDE



CONTACT

OUR LOCAL TEAM TO
DISCUSS YOUR LIVESTOCK NEEDS

Dan Warner
Livestock Agent
027 826 5768

Derek Mickleson
Livestock Agent
027 471 9025

Damian Clarke
Livestock Agent
027 498 7252



CARRFIELDLIVESTOCK.CO.NZ

ANGUS NZ BREED AVERAGE EBV'S FOR 2022 BORN CALVES

Calving Ease DIR	Calving Ease DTRS	Gestation Length	Birth Weight	Milk	Scrotal Size
+1.5	+1.0	-4.0	+4.3	+14	+2.0

200 Day Weight	400 Day Weight	600 Day Weight	Mat Cow Weight	Days to Calving	Carcass Weight
+42	+78	+101	+91	-4.2	+48

Eye Muscle Area	Rib Fat	Rump Fat	Retail Beef Yield	IMF%
+3.2	+1.1	+1.1	+0.4	+0.9

Self Replacing Index (\$)	AngusPure Index (\$)	Heifer/Dairy Terminal Index (\$)
+\$113	+\$112	+\$105



Call us today (06) 388 1917

Stephen: 0274 423 546

Blair: 0274 855 356

Mark: 0274 691 004

COVERING AREAS:

Waimarino, Rangitikei, Manawatu,
Whanganui & Horowhenua

**For all your Fat Stock &
Store Stock Requirements.**

**Proud to support the 2023 Okaka
Bull Sale of Paul & Susanna Revell**

ANGUS NEW ZEALAND BEEFCLASS
STRUCTURAL ASSESSMENT

		Dodility (1-5)	Front Feet Claw Set (1-9)	Rear Feet Claw Set (1-9)	Front Feet Angle (1-9)	Rear Feet Angle (1-9)	Rear Legs Side View (1-9)	Rear Legs Hind View (1-9)	Front View (1-9)	Sheath & Navel Score (1-5)	Capacity (1-5)	Muscle Score (A-E)
Lot	Tattoo	D	FC	RC	FA	RA	RS	RH	FF	SN	CP	LM
1	T234	2	6	4	7	7	6	6	5	5	4	A
2	T217	2	6	4	6	6	6	5	5	5	3	A
3	T221	2	6	4	6	6	6	6	6	5	3	B+
4	T259	1.5	6	4	6	6	6	6	5	4	4	B+
5	T203	1	6	5	7	6	6	6	6	5	4	A
6	T230	1.5	6	5	7	7	6	6	5	5	3	B+
7	T281	1.5	6	5	6	6	6	6	5	5	3	A
8	T245	1	6	4	6	6	6	5	5	5	3	A
9	T260	1	6	6	5.5	6	6	6	5	5	4	A+
10	T248	1.5	6	4	6	6.5	6	6	6	5	3	B
11	T233	1	6	5	7	7	6	6	5	5	3	B
12	T216	1	6	4	6	6	6	6	5	5	3	A
13	T228	1	7	5	7	6	6	6	5	5	4	A
14	T219	2	5	5	6	6.5	6	6	5	5	4	A
15	T252	1.5	5	5	6	6	6	6	5	5	4	A
16	T202	1.5	6	5	6	6	6	6	5	5	3	B
17	2220	1.5	6	4	6	6	6	6	6	5	3	B

NZ FARMERS LIVESTOCK

Working with Farmers for Farmers

Proudly working with
Paul & Susannah Revell
of Okaka Angus

At NZ Farmers Livestock, our clients benefit from our history and experience in the market. We bring extensive experience and knowledge gained through trusted and long-established relationships within the rural community. We add value for you, by supporting you, to market.

We also understand **Livestock Finance**. NZ Farmers Livestock Finance has a facility specifically available for bull financing. Finance flexibility is a necessity when farming - you know that, we know that.
Contact Simon Williams 027 491 2173 to find out more.

For more information, please contact:

Brent Bougen 027 210 4698
Stud Stock

Malcolm Coombe 027 432 6104
Manawatu Regional Manager

John Watson 027 494 1975

MyLiveStock
Website | Mobile | App

ANGUSPURE PARTNER STUD



AngusPure NZ has teamed up with 91 Angus studs who share in our vision - to focus on the end consumer. This stud is proud to be named as one of them, and by using the finest genetics and implementing best management practice they can help you produce more premium quality Angus beef.

Only our AngusPure Partner studs display these devices in their sale catalogues. They indicate bulls endorsed by AngusPure NZ.

A ANGUSPURE ENDORSED BULLS

AngusPure NZ continues to endorse bulls for sale that are either at or above +\$125 for the AngusPure index (API) and at or above \$115 for the AngusPRO index (PRO). These indexes give commercial farmers confidence that by using these selection tools, bulls are most likely to leave progeny with superior carcase quality. At the same time they achieve desirable outcomes for self replacing herds, as the AngusPure & AngusPRO indexes still reward cattle with strong maternal attributes like calving ease, scrotal and growth, along with carcase weight.

To qualify, bulls will be => +\$125 for AngusPure index OR => +\$115 for AngusPRO index

A+ EXTRA ANGUSPURE ENDORSEMENT FOR MARBLING

In addition to the 'A', and to assist bull buyers who wish to select for more marbling AngusPure are rewarding those animals that are either at or above +\$145 for the AngusPure index and at or above \$135 for the AngusPRO index. In addition to this they must have an IMF EBV (for marbling) equal to or greater than +2.2. These bulls will be awarded an 'A+' endorsement. Marbling is one of the very highest eating quality attributes and is necessary in order to meet some of the highest premium requirements for the export program, AngusPure Special Reserve.

To qualify, bulls will be => +\$145 for AngusPure index OR => +\$135 for AngusPRO index, and in addition all bulls must be => +2.2 for IMF EBV

AngusPure NZ recognises the need to lift the amount of marbling in our New Zealand cow genetics, in order to fill the requirements of consumers going forward. Marbling has two critical components; genetics and feeding. Feeding on a rising plane of nutrition is vital but without the genetics these attributes will not be able to express themselves.

May 2024 TransTasman Angus Cattle Evaluation - Percentile Bands for all 2022 born animals

Use this table as a guide to compare individual animals with the current genetic level of the breed

	Calv-Ease		Birth		Growth				Fert		Carcase					Indexes			Extra		
	Dir	Dtrs	GL	Bwt	200	400	600	Mwt	Milk	SS	DC	Cwt	EMA	Rib	P8	RBY	IMF	SR	AP	HDT	Doc
	%		days		kg				cm			days	kg	sq.cm	mm		%			\$	
High 1%	+10.1	+8.6	-9.3	+0.0	+63	+111	+146	+149	+27	+4.4	-7.7	+84	+10.8	+5.1	+6.5	+1.8	+4.0	+184	+205	+143	+43
High 5%	+8.2	+6.9	-7.5	+1.3	+56	+100	+131	+129	+23	+3.6	-6.6	+73	+8.2	+3.8	+4.7	+1.4	+3.0	+162	+177	+135	+36
High 10%	+7.0	+5.9	-6.6	+2.0	+53	+95	+124	+121	+21	+3.2	-6.0	+68	+6.9	+3.1	+3.8	+1.1	+2.5	+150	+162	+129	+32
High 20%	+5.5	+4.4	-5.6	+2.8	+49	+89	+116	+110	+18	+2.8	-5.3	+61	+5.5	+2.4	+2.8	+0.9	+1.9	+136	+144	+122	+28
High 30%	+4.2	+3.2	-5.0	+3.4	+46	+84	+110	+103	+17	+2.5	-4.9	+56	+4.6	+1.9	+2.1	+0.7	+1.5	+127	+132	+117	+26
High 40%	+3.1	+2.2	-4.4	+3.9	+43	+81	+105	+96	+16	+2.2	-4.5	+52	+3.8	+1.5	+1.6	+0.5	+1.2	+119	+122	+112	+24
50%	+2.0	+1.2	-4.0	+4.3	+41	+77	+100	+91	+14	+2.0	-4.2	+48	+3.1	+1.1	+1.1	+0.4	+0.9	+112	+112	+107	+22
Low 40%	+0.8	+0.2	-3.4	+4.7	+39	+74	+96	+85	+13	+1.8	-3.8	+44	+2.4	+0.7	+0.7	+0.3	+0.6	+105	+103	+102	+20
Low 30%	-0.5	-0.9	-2.9	+5.2	+37	+71	+91	+79	+12	+1.6	-3.5	+40	+1.7	+0.2	+0.1	+0.1	+0.3	+98	+92	+96	+18
Low 20%	-2.1	-2.2	-2.2	+5.7	+35	+67	+86	+72	+11	+1.3	-3.0	+36	+0.8	-0.3	-0.6	-0.1	-0.1	+89	+79	+89	+16
Low 10%	-4.6	-4.0	-1.3	+6.5	+31	+61	+77	+61	+9	+0.8	-2.4	+30	-0.4	-1.0	-1.6	-0.3	-0.6	+76	+62	+78	+12
Low 5%	-6.8	-5.8	-0.5	+7.1	+28	+57	+71	+52	+7	+0.4	-1.9	+24	-1.4	-1.7	-2.5	-0.6	-1.0	+65	+47	+68	+8


Negative (lower) values more favourable


Negative (lower) values more favourable

Based on the results of the May 2023 TACE analysis



REFERENCE SIREs

KAHARAU Q430 ^{SV}

Born: 11/09/19

ID: 17683019Q430

BRAVEHEART OF STERN ^{SV}

HIGHLANDER OF STERN
STERN 3886

S: KAHARAU FREEDOM 612 ^{SV}

KAHARAU 12-9549

KAHARAU 09-240
KAHARAU 09-8725

KAHARAU ARROW 08-18

KAHARAU COBALT 381
KAHARAU 7435

D: KAHARAU 12-9571

KAHARAU 06-7970

KAHARAU 620
KAHARAU 6930

May 2024 TransTasman Angus Cattle Evaluation					
Dir	DTRS	GL	BW	MILK	
-19.0	-13.0	+2.8	+9.8	+5	
65%	53%	80%	84%	72%	
200D	400D	600D	MCWt	SS	DC
+46	+80	+116	+125	+1.7	-1.6
85%	83%	85%	80%	81%	43%
Cwt	EMA	Rib	RUMP	RBY	IMF
+51	+6.7	-1.6	-2.5	+1.6	-1.5
72%	70%	71%	72%	64%	73%
INDEX					
SR	+\$36	AP	-\$24	HD	+\$13

A big traditional Kaharau bull. Well-structured and powerful with great temperament. Unfortunately lost him during first mating due to an accident. All bulls he produced are in the sale at lots 1,2 and 3.

ANGUSGS
Powered by Waggon GameSeek

REFERENCE SIRES

PINEBANK P80 ^{PV}



Born: 18/09/18

ID: 11990018P80

GLANWORTH WAIGROUP
14163

GLANWORTH WAIGROUP 1213
GLANWORTH WAIGROUP 12217

S: PINEBANK 109/16 ^{SV}

PINEBANK 112/13

WAITAWHETA E76
PINEBANK 39/09

PINEBANK 97/11

PINEBANK 49/09
PINEBANK 70/07

D: PINEBANK 163/14

PINEBANK 7/08

PINEBANK 8/06
PINEBANK WAIGROUP 147/03

May 2024 TransTasman Angus Cattle Evaluation

Dir	DTRS	GL	BW	MILK
+1.4	-0.1	-4.6	+5.1	+23
73%	59%	81%	93%	80%

200D	400D	600D	MCWt	SS	DC
+38	+86	+113	+91	+1.5	-2.0
92%	91%	92%	86%	88%	51%

Cwt	EMA	Rib	RUMP	RBV	IMF
+53	+7.8	+1.5	+0.6	+1.5	-0.9
80%	79%	80%	80%	75%	81%

INDEX

SR	+\$86	AP	+\$83	HD	+\$112
----	--------------	----	--------------	----	---------------

Pure NZ. Pinebank P80 has plenty of growth which has shown in his progeny. He was a standout from a calf and used at Pinebank before coming here. We are keeping two of his bulls this year. His sons in sale are lots 6,12 and 14, the latter used for mating as a yearling. Big EMA, good fats and positive calving ease.

BREED AVE. EBV'S FOR 2022 BORN CALVES

Dir	Dtrs	GL	BW	200D	400D	600D	MCWt	Milk	SS
+1.5	+1.0	-4.0	+4.3	+42	+78	+101	+91	+14	+2.0

DC	Cwt	EMA	RIB	RUMP	RBV	IMF	SR	AP	HDT
-4.2	+48	+3.2	+1.1	+1.1	+0.4	+0.9	+\$113	+\$112	+\$105

REFERENCE SIRES

RESURGAM BLU-PRINT F3180 ^{SV}



Born: 20/08/18

ID: 204420183180

RESURGAM BLU-PRINT T368

RESURGAM BLU-PRINT P215
WAIMATA K1147

S: RESURGAM BLU-PRINT Y813 ^{SV}

RESURGAM MANDY U408 (ET)

PINEBANK WAIGROUP 41 /97
FOSSIL CREEK MANDY (ET)

RESURGAM NGAHERE U407

PINEBANK WAIGROUP 41 /97
RESURGAM SOUVENIR S253 (ET)

D: RESURGAM JULIE ERICA B2294

RESURGAM JULIE ERICA U450
SV

RESURGAM WAIOTANE S263 (ET)
WAITAWHETA A21

May 2024 TransTasman Angus Cattle Evaluation					
Dir	DTRS	GL	BW	MILK	
-4.2	-10.9	-4.6	+5.5	+2	
69%	55%	79%	89%	73%	
200D	400D	600D	MCWt	SS	DC
+25	+49	+56	+84	+0.8	-4.7
88%	86%	88%	83%	82%	46%
Cwt	EMA	Rib	RUMP	RBY	IMF
-7	-5.2	+0.8	-0.5	+0.6	+0.0
76%	72%	74%	74%	67%	75%
INDEX					
SR	+\$85	AP	+\$2	HD	+\$57

Pure NZ. Resurgam F3180 has had 4 matings here at Okaka.

He tends to produce solid and compact progeny ideal for steep hill country. Take a look at lots 7,10,11,17 in sale. They may not be the biggest bulls, but they are meaty and are really starting to show their worth.

BREED AVE. EBV'S FOR 2022 BORN CALVES

Dir	Dtrs	GL	BW	200D	400D	600D	MCWt	Milk	SS
+1.5	+1.0	-4.0	+4.3	+42	+78	+101	+91	+14	+2.0
DC	Cwt	EMA	RIB	RUMP	RBY	IMF	SR	AP	HDT
-4.2	+48	+3.2	+1.1	+1.1	+0.4	+0.9	+\$113	+\$112	+\$105

REFERENCE SIRES

MEADOWSLEA Q347 ^{PV}



Born: 01/10/19

ID: 19134019347

RANGATIRA COMMODORE
13-19

DANDALOO ADMIRAL 741
KAHARAU 08-8330

S: RANGATIRA 16209 ^{SV}

KAHARAU 09-8703

KAHARAU 07-610
KAHARAU 07-8061

TURIHAUA CRUMP E5 (ET) SV

TURIHAUA CRUMBLE Y167
TURIHAUA Q263

D: MEADOWSLEA K944 SV

MEADOWSLEA C905

MEADOWSLEA 70
MEADOWSLEA 95

May 2024 TransTasman Angus Cattle Evaluation

Dir	DTRS	GL	BW	MILK
-2.1	+3.1	-2.9	+3.0	+15
68%	52%	86%	90%	72%

200D	400D	600D	MCWt	SS	DC
+22	+48	+54	+66	+2.6	-5.6
87%	86%	88%	83%	87%	49%

Cwt	EMA	Rib	RUMP	RBY	IMF
-1	+1.4	+2.2	+2.9	+0.4	+1.2
76%	74%	75%	75%	70%	76%

INDEX

SR	+\$107	AP	+\$57	HD	+\$69
----	---------------	----	--------------	----	--------------

Meadowslea Q347 is a moderate perfectly structured Meadowslea bull bought by Glen R Angus for \$32,000. His sire Rangatira 16209 had a real stamp on that year group. Used as AI sire here at Okaka. Lot 16 used over our heifers and lot 5 has more than competed with peers. More to come next year.

BREED AVE. EBV'S FOR 2022 BORN CALVES

Dir	Dtrs	GL	BW	200D	400D	600D	MCWt	Milk	SS
+1.5	+1.0	-4.0	+4.3	+42	+78	+101	+91	+14	+2.0

DC	Cwt	EMA	RIB	RUMP	RBY	IMF	SR	AP	HDT
-4.2	+48	+3.2	+1.1	+1.1	+0.4	+0.9	+\$113	+\$112	+\$105

REFERENCE SIRES

PUKE-NUI 12/333 ^{SV}



Born: 14/08/12

ID: 21168012333

KAHARAU 05-61

WAIWERA H393
RANGATIRA 475

S: KAHARAU 09-265

KAHARAU 06-7996

KAHUITARA CAVALIER 815
KAHARAU 6042 (ET)

WAIMATA IMPACT E265

679 OF WAIMATA
C524 OF WAIMATA

D: PUKE-NUI 84

WAIMATA L1265

WAIMATA ROB 18
E678 OF WAIMATA

May 2024 TransTasman Angus Cattle Evaluation

Dir	DTRS	GL	BW	MILK
+5.5	+2.0	-2.0	+2.2	+9
69%	55%	79%	91%	77%

200D	400D	600D	MCWt	SS	DC
+20	+42	+48	+39	-0.1	-3.8
89%	88%	90%	84%	85%	49%

Cwt	EMA	Rib	RUMP	RBV	IMF
+14	-1.9	+3.0	+3.7	-0.4	+2.0
77%	75%	76%	76%	71%	77%

INDEX

SR	+\$97	AP	+\$67	HD	+\$97
----	--------------	----	--------------	----	--------------

Big Boy's lasted to 11 yrs. He always held condition and brings longevity and consistency to the table. with 1 bull in the sale - T252 lot 15 used over heifers. Big Boy was a real character and will have his last bulls in next year's sale.

BREED AVE. EBV'S FOR 2022 BORN CALVES

Dir	Dtrs	GL	BW	200D	400D	600D	MCWt	Milk	SS
+1.5	+1.0	-4.0	+4.3	+42	+78	+101	+91	+14	+2.0

DC	Cwt	EMA	RIB	RUMP	RBV	IMF	SR	AP	HDT
-4.2	+48	+3.2	+1.1	+1.1	+0.4	+0.9	+\$113	+\$112	+\$105

REFERENCE SIRES

OKAKA BIG BOY R27 ^{SV}



Born: 08/09/20

ID: 21242020R27

KAHARAU 09-265

KAHARAU 05-61

KAHARAU 06-7996

S: PUKE-NUI 12/333 ^{SV}

PUKE-NUI 84

WAIMATA IMPACT E265

WAIMATA L1265

TANGIHAU 0935

TURIHAUA HUMBLE Y53

TANGIHAU 285

D: ALPINE LEGACY 827 ^{SV}

ALPINE LEGACY 634

THE DOWNS TODD

ALPINE LEGACY 409

May 2024 TransTasman Angus Cattle Evaluation

Dir	DTRS	GL	BW	MILK
-1.3	-3.2	+2.3	+2.5	+2
62%	49%	80%	83%	71%

200D	400D	600D	MCWt	SS	DC
+20	+44	+43	+44	+1.3	-3.1
83%	81%	82%	78%	78%	39%

Cwt	EMA	Rib	RUMP	RBY	IMF
+7	+1.6	+2.4	+4.2	+0.1	+1.8
70%	68%	69%	70%	61%	72%

INDEX

SR	+\$111	AP	+\$57	HD	+\$68
----	---------------	----	--------------	----	--------------

Like his sire Puke-Nui 333 or Big Boy, this bull (Big Boy Junior) looked great right from the start. and is creating moderate and meaty cattle. Just like the one bull (lot 14) in the sale. More to come next year.

ANGUSCS
Powered by Hovgen GenesSeek

BREED AVE. EBV'S FOR 2022 BORN CALVES

Dir	Dtrs	GL	BW	200D	400D	600D	MCWt	Milk	SS
+1.5	+1.0	-4.0	+4.3	+42	+78	+101	+91	+14	+2.0

DC	Cwt	EMA	RIB	RUMP	RBY	IMF	SR	AP	HDT
-4.2	+48	+3.2	+1.1	+1.1	+0.4	+0.9	+\$113	+\$112	+\$105

REFERENCE SIRES

PUKE-NUI 19/194 ^{SV}



Born: 16/08/19

ID: 21168019194

MATAURI SOUND REASON
H466

MATAURI RESOLUTION F030
MATAURI F027

S: MATAURI SOUND REASON L382

MATAURI 091001

HARB PENDLETON 765 J H (IMP USA)
MATAURI 07734

WAIMATA 265 (ET)

WAIMATA SKY HIGH M228
WAIMATA M1391

D: PUKE-NUI 13/498

PUKE-NUI 11/284

WAIMATA J187
B1135 OF KENHARDT

May 2024 TransTasman Angus Cattle Evaluation

Dir	DTRS	GL	BW	MILK
+3.2	+0.2	-2.7	+4.7	+5
66%	53%	80%	86%	73%

200D	400D	600D	MCWt	SS	DC
+41	+82	+98	+114	+1.7	-4.4
85%	83%	85%	81%	77%	47%

Cwt	EMA	Rib	RUMP	RBV	IMF
+54	-4.0	+5.4	+4.7	-0.8	+0.0
73%	70%	72%	72%	65%	74%

INDEX

SR	+\$121	AP	+\$98	HD	+\$106
----	---------------	----	--------------	----	---------------

A Puke-Nui bull purchased in 2021 for his moderate but meaty balance. Although he didn't look it, he was the heaviest bull in the sale. His son at lot 5 has also weighed well all the way through.

BREED AVE. EBV'S FOR 2022 BORN CALVES

Dir	Dtrs	GL	BW	200D	400D	600D	MCWt	Milk	SS
+1.5	+1.0	-4.0	+4.3	+42	+78	+101	+91	+14	+2.0

DC	Cwt	EMA	RIB	RUMP	RBV	IMF	SR	AP	HDT
-4.2	+48	+3.2	+1.1	+1.1	+0.4	+0.9	+\$113	+\$112	+\$105

REFERENCE SIRES

KAHARAU OLYMPIC Q327 ^{SV}

Born: 05/08/19

ID: 17683019Q327

KAHARAU ATLAS 12-75

KAHARAU ATLAS 797
KAHARAU 05-7778

S: KAHARAU ATLANTIC 454 ^{SV}

KAHARAU 12-9498

KAHARAU 09-240
KAHARAU 09-8846

MATAURI REALITY 839

SCHURRTOP REALITY X723
MATAURI 06663

D: KAHARAU 1058

KAHARAU 08-8564 SV

KAHARAU CLASS 790
KAHARAU 05-7756

May 2024 TransTasman Angus Cattle Evaluation

Dir	DTRS	GL	BW	MILK
-3.2	+1.0	-1.2	+5.4	-2
71%	56%	91%	94%	74%

200D	400D	600D	MCWt	SS	DC
+38	+66	+81	+104	+3.3	-4.2
91%	91%	92%	85%	88%	48%

Cwt	EMA	Rib	RUMP	RBY	IMF
+27	+2.8	+1.1	+1.3	+0.0	+1.1
78%	78%	78%	78%	73%	79%

INDEX

SR	+\$114	AP	+\$84	HD	+\$73
----	---------------	----	--------------	----	--------------

Kaharau Olympic Q327 sold in the Kaharau 2021 sale for \$106,000 to Tapiri and Elgin studs. Moderate meaty bull with good temperament. Performing well at those studs. We bought in a R10 cow in calf to him from Meadowslea. son in sale lot 8.

ANGUS
Powered by Neogen Genesee

MEADOWSLEA P565 ^{SV}

Born: 12/09/18

ID: 19134018565

MATAURI REALITY 839

SCHURRTOP REALITY X723
MATAURI 06663

S: TAIMATE LAZARUS L12 ^{PV}

TAIMATE 1348 ^{DV}

SUDELEY 882
TAIMATE 1030

GLANWORTH WAIGROUP
0816 SV

SHALOM WAIGROUP 101/01
GLANWORTH WAIGROUP 226 (ET)

D: MEADOWSLEA G943

MEADOWSLEA D212

TE MANIA 05 461
MEADOWSLEA 63

May 2024 TransTasman Angus Cattle Evaluation

Dir	DTRS	GL	BW	MILK
+3.3	+2.7	-6.0	+4.7	+13
74%	61%	83%	94%	77%

200D	400D	600D	MCWt	SS	DC
+35	+69	+91	+83	+3.6	-5.0
91%	92%	92%	86%	92%	57%

Cwt	EMA	Rib	RUMP	RBY	IMF
+43	+2.5	-0.7	-1.5	+0.7	+0.7
80%	81%	81%	81%	76%	81%

INDEX

SR	+\$113	AP	+\$100	HD	+\$107
----	---------------	----	---------------	----	---------------

A Taimate Lazarus son from Meadowslea. Was Meadowsleas top keeper bull in 2020. You can see the fleshing in lot 9 T260, his only bull in the sale.



THE INDUSTRY STANDARD NOW HAS HIGHER STANDARDS.

**Angus GS is not resting on past accomplishments.
There's more work to be done.**

With the addition of 22,000 SNPs, Angus GS becomes the unmatched Angus specific genomic profiler. It provides greater power for traits including calving ease, birth weight, marbling, female fertility and more.

Logo displayed on all animal lots that have been SNP tested and included in a Genomic Evaluation, therefore shows Genomics under Traits Analysed. All AngusGS 75K tested animals have had parentage run by PBB DNA using the Helical system. This can include both sire and dam verification.

Realise your operation's full potential.

ANGUSGS
Powered by Neogen GeneSeek

TALK TO THE PBB DNA TEAM

M: 06 323 4484 **E:** dna@pbbnz.com
pbbnz.com

Scan the QR code to
find out more



LOT 1 | OKAKA NICHOLAS T234 ^{PV}

Born: 09/09/22

ID: 21242022T234

KAHARAU FREEDOM 612 ^{SV}

BRAVEHEART OF STERN ^{SV}
KAHARAU 12-9549

S: KAHARAU Q430 ^{SV}

KAHARAU 12-9571

KAHARAU ARROW 08-18
KAHARAU 06-7970

TANGIHAU G21

STERN 0778
TANGIHAU 742

D: RED OAK 15468

RED OAK 362

TURIROA 06362
RED OAK 03366

May 2024 TransTasman Angus Cattle Evaluation					
Dir	DTRS	GL	BW	MILK	
-8.0	-3.5	-0.4	+8.0	+7	
61%	49%	79%	80%	70%	
200D	400D	600D	MCWt	SS	DC
+43	+76	+110	+107	+1.2	-3.4
81%	79%	80%	75%	76%	37%
CWT	EMA	Rib	RUMP	RBV	IMF
+58	+3.1	-0.8	+0.1	+1.0	-0.9
67%	66%	67%	68%	59%	70%
INDEX					Actual Scrotal size
SR	+\$86	AP	+\$62	HDT	+\$63
					38cm

NOTES: Deep and meaty bull from an elite R9 Red Oak cow (6/7). My pick, very close to keeping him. His sire Kaharau Q430 was a big strong placid bull. Not for heifers. Weaned 262kg.



PURCHASER PRICE

BREED AVE. EBV'S FOR 2022 BORN CALVES									
Dir	Dtrs	GL	BW	200D	400D	600D	MCWt	Milk	SS
+1.5	+1.0	-4.0	+4.3	+42	+78	+101	+91	+14	+2.0
DC	Cwt	EMA	RIB	RUMP	RBV	IMF	SR	AP	HDT
-4.2	+48	+3.2	+1.1	+1.1	+0.4	+0.9	+\$113	+\$112	+\$105

LOT 2
| OKAKA NICHOLAS T217
^{SV}

Born: 22/08/22

ID: 21242022T217

KAHARAU FREEDOM 612 ^{SV}
 BRAVEHEART OF STERN ^{SV}
 KAHARAU 12-9549

S: KAHARAU Q430 ^{SV}

KAHARAU 12-9571
 KAHARAU ARROW 08-18
 KAHARAU 06-7970

KAHARAU 11-871
 KAHARAU LANCER 699
 KAHARAU CAROLINE 7356

D: RANGATIRA 14-222

KAHARAU 11-9315
 KAHARAU XTRA 08-920
 KAHARAU 07-8069

May 2024 TransTasman Angus Cattle Evaluation					
Dir	DTRS	GL	BW	MILK	
-0.5	-1.9	-1.9	+5.7	-1	
61%	51%	80%	80%	71%	
200D	400D	600D	MCWt	SS	DC
+33	+65	+90	+121	+0.9	-3.7
81%	79%	80%	76%	77%	39%
CWT	EMA	Rib	RUMP	RBV	IMF
+36	+5.6	+0.7	+0.8	+1.3	+0.5
67%	66%	67%	68%	59%	71%
INDEX					Actual Scrotal size
SR	+\$107	AP	+\$89	HDT	+\$94
					43cm

NOTES: Another great Q430 son. Well-structured and from a Rangatira dam 7/7 who had 2 top bulls in 2022 & 2023 sales. Not for heifers. Weaned 302kg.



PURCHASER PRICE

BREED AVE. EBV'S FOR 2022 BORN CALVES									
Dir	Dtrs	GL	BW	200D	400D	600D	MCWt	Milk	SS
+1.5	+1.0	-4.0	+4.3	+42	+78	+101	+91	+14	+2.0
DC	Cwt	EMA	RIB	RUMP	RBV	IMF	SR	AP	HDT
-4.2	+48	+3.2	+1.1	+1.1	+0.4	+0.9	+\$113	+\$112	+\$105

LOT 3 | **OKAKA NICHOLAS T221** ^{PV}

Born: 28/08/22

ID: 21242022T221

KAHARAU FREEDOM 612 ^{SV} BRAVEHEART OF STERN ^{SV}
 KAHARAU 12-9549

S: KAHARAU Q430 ^{SV}

KAHARAU 12-9571 KAHARAU ARROW 08-18
 KAHARAU 06-7970

PUKE-NUI 12/333 ^{SV} KAHARAU 09-265
 PUKE-NUI 84

D: OKAKA 713 ^{SV}

MERCHISTON SOPHIA 314 MERCHISTON COINTREAU 128
 MERCHISTON SOPHIA 770

May 2024 TransTasman Angus Cattle Evaluation					
Dir	DTRS	GL	BW	MILK	
-7.6	-8.2	+0.7	+7.2	+12	
60%	49%	79%	80%	69%	
200D	400D	600D	MCWt	SS	DC
+39	+69	+97	+98	+1.2	-2.5
81%	78%	79%	75%	76%	38%
CWT	EMA	Rib	RUMP	RBV	IMF
+44	+6.7	-1.9	-2.1	+2.0	-2.1
66%	66%	66%	67%	58%	71%
INDEX					Actual Scrotal size
SR	+\$62	AP	+\$19	HDT	+\$62
					39cm

NOTES: A Kaharau Q430 sired bull, from a homebred Okaka cow (5/5). Another bull that will produce big weaners. Not for heifers. weaned 280kg.



PURCHASER PRICE

BREED AVE. EBV'S FOR 2022 BORN CALVES									
Dir	Dtrs	GL	BW	200D	400D	600D	MCWt	Milk	SS
+1.5	+1.0	-4.0	+4.3	+42	+78	+101	+91	+14	+2.0
DC	Cwt	EMA	RIB	RUMP	RBV	IMF	SR	AP	HDT
-4.2	+48	+3.2	+1.1	+1.1	+0.4	+0.9	+\$113	+\$112	+\$105

LOT 4 | OKAKA REASON T259

Born: 26/09/22

ID: 21242022T259

MATAURI SOUND REASON
L382

MATAURI SOUND REASON H466
MATAURI 091001

S: Puke-Nui 19/194 ^{SV}

PUKE-NUI 13/498

WAIMATA 265 (ET)
PUKE-NUI 11/284

ALPINE GAMBLER 498

WAIMATA GAMBLER 7337
ALPINE BRITTANY 535

D: ARIKI 504 SV

ARIKI 002

FARFIELD IMAGE MAKER 702
HILLSBOROUGH 942

May 2024 TransTasman Angus Cattle Evaluation					
Dir	DTRS	GL	BW	MILK	
+2.7	-4.3	-3.0	+5.4	+9	
61%	49%	80%	80%	70%	
200D	400D	600D	MCWt	SS	DC
+41	+78	+98	+111	+1.1	-5.5
81%	79%	80%	75%	76%	38%
CWT	EMA	Rib	RUMP	RBV	IMF
+45	+1.0	+3.3	+2.0	+0.3	+0.3
67%	66%	67%	67%	58%	71%
INDEX					Actual Scrotal size
SR	+\$129	AP	+\$111	HDT	\$109
					39cm

NOTES: Good bull with solid figures. From our best Ariki cow who produced a sale bull last year. Solid growth with positive fats. Weaned 316kg.



PURCHASER PRICE

BREED AVE. EBV'S FOR 2022 BORN CALVES									
Dir	Dtrs	GL	BW	200D	400D	600D	MCWt	Milk	SS
+1.5	+1.0	-4.0	+4.3	+42	+78	+101	+91	+14	+2.0
DC	Cwt	EMA	RIB	RUMP	RBV	IMF	SR	AP	HDT
-4.2	+48	+3.2	+1.1	+1.1	+0.4	+0.9	+\$113	+\$112	+\$105

LOT 5 | OKAKA RANGATIRA T203 ^{DV}

Born: 11/08/22

ID: 21242022T203

RANGATIRA 16209 ^{SV}

RANGATIRA COMMODORE 13-19
KAHARAU 09-8703

S: MEADOWSLEA Q347 ^{PV}

MEADOWSLEA K944 ^{SV}

TURIHAUA CRUMP E5 (ET) ^{SV}
MEADOWSLEA C905

TURIHAUA CRUMP E5 (ET) ^{SV}

TURIHAUA CRUMBLE Y167
TURIHAUA Q263

D: MEADOWSLEA L171 ^{DV}

MEADOWSLEA B592

MEADOWSLEA 247
MEADOWSLEA 214

May 2024 TransTasman Angus Cattle Evaluation					
Dir	DTRS	GL	BW	MILK	
-2.0	+1.8	-3.4	+2.9	+14	
64%	53%	82%	82%	71%	
200D	400D	600D	MCWt	SS	DC
+28	+61	+72	+82	+2.2	-5.1
82%	80%	81%	77%	79%	47%
CWT	EMA	Rib	RUMP	RBV	IMF
+12	+1.8	+3.1	+4.0	-0.3	+1.8
71%	70%	70%	71%	63%	74%
INDEX					Actual Scrotal size
SR	+\$106	AP	+\$75	HDT	+\$75
					41 cm

NOTES: Quality balanced bull from a good Meadowslea dam bought as a heifer (7/7). Sire is Meadowslea Q347 bought by Glen R Angus for \$32,000 and he also had perfect structure. A bit of Turihava Crump E5 on both sides. Good fats and IMF. Ideal for heifers too. Weaned 278kg.



PURCHASER PRICE

BREED AVE. EBV'S FOR 2022 BORN CALVES									
Dir	Dtrs	GL	BW	200D	400D	600D	MCWt	Milk	SS
+1.5	+1.0	-4.0	+4.3	+42	+78	+101	+91	+14	+2.0
DC	Cwt	EMA	RIB	RUMP	RBV	IMF	SR	AP	HDT
-4.2	+48	+3.2	+1.1	+1.1	+0.4	+0.9	+\$113	+\$112	+\$105

LOT 6 | OKAKA FALLOON T230 PV

Born: 08/09/22

ID: 21242022T230

PINEBANK 109/16 SV

GLANWORTH WAIGROUP 14163
PINEBANK 112/13

S: PINEBANK P80 PV

PINEBANK 163/14

PINEBANK 97/11
PINEBANK 7/08

WAITAWHETA A76

WAITAWHETA 0001W24
WAITAWHETA V50

D: WAITAWHETA N20 SV

WAITAWHETA E57

WAITAWHETA Z1
WAITAWHETA X107

May 2024 TransTasman Angus Cattle Evaluation					
Dir	DTRS	GL	BW	MILK	
-4.7	-4.6	-3.5	+6.0	+12	
66%	57%	80%	82%	73%	
200D	400D	600D	MCWt	SS	DC
+32	+70	+84	+82	+0.6	-3.0
83%	81%	81%	78%	79%	45%
CWT	EMA	Rib	RUMP	RBY	IMF
+25	+5.6	+1.2	+0.3	+1.5	-0.5
71%	70%	71%	71%	64%	74%
INDEX					Actual Scrotal size
SR	+\$98	AP	+\$52	HDT	\$72
					40cm

NOTES: Pure NZ genetics. Pinebank P80 son gas grown out well like his sire. From a very moderate Waitawheta cow (5/5) who is now showing her true worth. Well-muscled with good EMA. Weaned 277kg.



PURCHASER PRICE

BREED AVE. EBV'S FOR 2022 BORN CALVES									
Dir	Dtrs	GL	BW	200D	400D	600D	MCWt	Milk	SS
+1.5	+1.0	-4.0	+4.3	+42	+78	+101	+91	+14	+2.0
DC	Cwt	EMA	RIB	RUMP	RBY	IMF	SR	AP	HDT
-4.2	+48	+3.2	+1.1	+1.1	+0.4	+0.9	+\$113	+\$112	+\$105

LOT 7 | OKAKA RESURGENCE T281

Born: 08/10/22

ID: 21242022T281

RESURGAM BLU-PRINT Y813 ^{SV} RESURGAM BLU-PRINT T368
RESURGAM MANDY U408 (ET)

S: RESURGAM BLU-PRINT F3180 ^{SV}

RESURGAM JULIE ERICA B2294 RESURGAM NGAHERE U407
RESURGAM JULIE ERICA U450 ^{SV}

TURIROA 14830 (ET) ^{SV} TURIROA RAMBLE 11541 (ET)
TURIROA TULIP 459

D: MEADOWSLEA Q511 ^{SV}

MEADOWSLEA M472 MEADOWSLEA F540
MEADOWSLEA D188

May 2024 TransTasman Angus Cattle Evaluation					
Dir	DTRS	GL	BW	MILK	
-8.1	-9.9	-6.0	+6.9	+3	
63%	52%	80%	80%	70%	
200D	400D	600D	MCWt	SS	DC
+31	+56	+67	+82	+1.6	-5.5
81%	79%	80%	76%	77%	42%
CWT	EMA	Rib	RUMP	RBV	IMF
-4	-6.1	-0.4	-0.3	+0.2	+0.1
68%	67%	68%	69%	60%	72%
INDEX					Actual Scrotal size
SR	+\$96	AP	+\$16	HDT	+\$41
					39cm

NOTES: A late born bull with good structure who has really come into his own. Resurgam F3180 sire has really gelled with a moderate Meadowslea dam (3/3) to create a meaty bull with a good butt. The figures really don't do him justice. Weaned 239kg.



PURCHASER PRICE

BREED AVE. EBV'S FOR 2022 BORN CALVES									
Dir	Dtrs	GL	BW	200D	400D	600D	MCWt	Milk	SS
+1.5	+1.0	-4.0	+4.3	+42	+78	+101	+91	+14	+2.0
DC	Cwt	EMA	RIB	RUMP	RBV	IMF	SR	AP	HDT
-4.2	+48	+3.2	+1.1	+1.1	+0.4	+0.9	+\$113	+\$112	+\$105

LOT 8 | OKAKA T245

Born: 17/09/22

ID: 21242022T245

KAHARAU ATLANTIC 454 ^{SV} KAHARAU ATLAS 12-75
KAHARAU 12-9498

S: KAHARAU OLYMPIC Q327 ^{SV}

KAHARAU 1058 MATAURI REALITY 839
KAHARAU 08-8564 ^{SV}

MEADOWSLEA F540 MEADOWSLEA D227
MEADOWSLEA D042

D: MEADOWSLEA H144 ^{SV}

MEADOWSLEA F666 STERN 0713
MEADOWSLEA C1015

May 2024 TransTasman Angus Cattle Evaluation					
Dir	DTRS	GL	BW	MILK	
-1.6	-3.1	-2.0	+5.4	+7	
63%	52%	80%	81%	71%	
200D	400D	600D	MCWt	SS	DC
+33	+63	+72	+69	+2.2	-5.2
81%	80%	80%	76%	77%	44%
CWT	EMA	Rib	RUMP	RBV	IMF
+21	+3.4	+3.1	+5.6	-0.1	+0.3
68%	68%	68%	69%	62%	71%
INDEX					Actual Scrotal size
SR	+\$140	AP	+\$102	HDT	+\$78
					40cm

NOTES: T245 is from the \$106,000 Kaharau Olympic sire and a R12yr Meadowslea dam (10/10) whose still going. A moderate, meaty bull ideal for steep hill country. Good muscling and well-structured. Weaned 290kg.



PURCHASER PRICE

BREED AVE. EBV'S FOR 2022 BORN CALVES									
Dir	Dtrs	GL	BW	200D	400D	600D	MCWt	Milk	SS
+1.5	+1.0	-4.0	+4.3	+42	+78	+101	+91	+14	+2.0
DC	Cwt	EMA	RIB	RUMP	RBV	IMF	SR	AP	HDT
-4.2	+48	+3.2	+1.1	+1.1	+0.4	+0.9	+\$113	+\$112	+\$105

LOT 9 | OKAKA T260

Born: 28/09/22

ID: 21242022T260

TAIMATE LAZARUS L12 ^{PV}

MATAURI REALITY 839
TAIMATE 1348 ^{DV}

S: MEADOWSLEA P565 ^{SV}

MEADOWSLEA G943

GLANWORTH WAIGROUP 0816 ^{SV}
MEADOWSLEA D212

KAHARAU 07-558

RANGATIRA GERONIMO 843
KAHARAU 5824

D: MEADOWSLEA H254 ^{SV}

MEADOWSLEA D226

PIKO BURN 31-03
MEADOWSLEA 122

May 2024 TransTasman Angus Cattle Evaluation					
Dir	DTRS	GL	BW	MILK	
+0.0	-1.1	-3.6	+5.3	+12	
53%	44%	56%	71%	58%	
200D	400D	600D	MCWt	SS	DC
+36	+68	+87	+83	+2.6	-5.5
68%	68%	71%	66%	62%	42%
CWT	EMA	Rib	RUMP	RBY	IMF
+38	+2.4	+2.6	+3.2	+0.2	+0.6
59%	56%	58%	57%	54%	56%
INDEX					Actual Scrotal size
SR	+\$128	AP	+\$109	HDT	\$92
					38cm

NOTES: Well-muscled bull with good capacity. From a good old Meadowslea cow (9/9). Sire was a Lazarus son also from Meadowslea Angus. Ideal for steep hill country. Very good fats, solid EBVs. Weaned 273kg.



PURCHASER PRICE

BREED AVE. EBV'S FOR 2022 BORN CALVES									
Dir	Dtrs	GL	BW	200D	400D	600D	MCWt	Milk	SS
+1.5	+1.0	-4.0	+4.3	+42	+78	+101	+91	+14	+2.0
DC	Cwt	EMA	RIB	RUMP	RBY	IMF	SR	AP	HDT
-4.2	+48	+3.2	+1.1	+1.1	+0.4	+0.9	+\$113	+\$112	+\$105

LOT 10 | OKAKA RESURGENCE T248

Born: 19/09/22

ID: 21242022T248

RESURGAM BLU-PRINT Y813 ^{SV} RESURGAM BLU-PRINT T368
 RESURGAM MANDY U408 (ET)

S: RESURGAM BLU-PRINT F3180 ^{SV}

RESURGAM JULIE ERICA B2294 RESURGAM NGAHERE U407
 RESURGAM JULIE ERICA U450 ^{SV}

MEADOWSLEA D215 PIKO BURN 31-03
 MEADOWSLEA 144

D: MEADOWSLEA F574

MEADOWSLEA D168 FARFIELD AVORIO 316
 MEADOWSLEA 163

May 2024 TransTasman Angus Cattle Evaluation					
Dir	DTRS	GL	BW	MILK	
-3.2	-11.4	-4.7	+6.2	+5	
63%	52%	80%	81%	71%	
200D	400D	600D	MCWt	SS	DC
+33	+58	+76	+87	+0.9	-4.9
82%	79%	80%	77%	77%	44%
CWT	EMA	Rib	RUMP	RBV	IMF
+14	-4.3	+2.3	+2.3	-0.1	+0.4
69%	68%	69%	70%	62%	73%
INDEX					Actual Scrotal size
SR	+\$94	AP	+\$44	HDT	+\$69
					38cm

NOTES: Last calf for Meadowslea F574 (11 / 11). T248 is another rock from Resurgam F3180 with good fats ideal for steep hill country. Not for heifers. Weaned 282kg.



PURCHASER PRICE

BREED AVE. EBV'S FOR 2022 BORN CALVES									
Dir	Dtrs	GL	BW	200D	400D	600D	MCWt	Milk	SS
+1.5	+1.0	-4.0	+4.3	+42	+78	+101	+91	+14	+2.0
DC	Cwt	EMA	RIB	RUMP	RBV	IMF	SR	AP	HDT
-4.2	+48	+3.2	+1.1	+1.1	+0.4	+0.9	+\$113	+\$112	+\$105

LOT 11 | OKAKA RESURGENCE T233 PV

Born: 09/09/22

ID: 21242022T233

RESURGAM BLU-PRINT Y813 SV

RESURGAM BLU-PRINT T368
RESURGAM MANDY U408 (ET)

S: RESURGAM BLU-PRINT F3180 SV

RESURGAM JULIE ERICA B2294

RESURGAM NGAHERE U407
RESURGAM JULIE ERICA U450 SV

WAITAWHETA F150

WAITAWHETA 003Y39
WAITAWHETA C15

D: WAITAWHETA J101

WAITAWHETA G14

WAITAWHETA B11
WAITAWHETA A120

May 2024 TransTasman Angus Cattle Evaluation					
Dir	DTRS	GL	BW	MILK	
-1.1	+0.4	-4.6	+4.8	+9	
64%	54%	80%	81%	71%	
200D	400D	600D	MCWt	SS	DC
+25	+52	+69	+78	+1.5	-4.5
82%	80%	81%	77%	77%	42%
CWT	EMA	Rib	RUMP	RBV	IMF
+6	-7.1	+1.1	+1.0	+0.4	-1.5
70%	68%	69%	70%	62%	73%
INDEX					Actual Scrotal size
SR	+\$78	AP	+\$15	HDT	+\$73
					41 cm

NOTES: Pure NZ bull. Great body on T233. Resurgam F3180 again, dam Wiatawheta J101 (3 bulls to sale). Ideal for steep hill country again. Not for heifers. Weaned 251 kg.



PURCHASER PRICE

BREED AVE. EBV'S FOR 2022 BORN CALVES									
Dir	Dtrs	GL	BW	200D	400D	600D	MCWt	Milk	SS
+1.5	+1.0	-4.0	+4.3	+42	+78	+101	+91	+14	+2.0
DC	Cwt	EMA	RIB	RUMP	RBV	IMF	SR	AP	HDT
-4.2	+48	+3.2	+1.1	+1.1	+0.4	+0.9	+\$113	+\$112	+\$105

LOT 12 | OKAKA FALLOON T216 PV

Born: 23/08/22

ID: 21242022T216

PINEBANK 109/16 SV

GLANWORTH WAIGROUP 14163
PINEBANK 112/13

S: PINEBANK P80 PV

PINEBANK 163/14

PINEBANK 97/11
PINEBANK 7/08

PINEBANK 50/08

PINEBANK WAIGROUP 14/02
PINEBANK A28

D: WAITAWHETA G53

WAITAWHETA E66

WAITAWHETA A76
WAITAWHETA 405

May 2024 TransTasman Angus Cattle Evaluation					
Dir	DTRS	GL	BW	MILK	
+5.1	+1.4	-3.2	+2.5	+19	
66%	57%	81%	83%	74%	
200D	400D	600D	MCWt	SS	DC
+24	+60	+66	+39	+1.3	-4.0
83%	81%	82%	79%	79%	45%
CWT	EMA	Rib	RUMP	RBY	IMF
+28	+8.3	+4.0	+3.7	+1.4	-1.7
72%	71%	71%	72%	65%	75%
INDEX					Actual Scrotal size
SR	+\$131	AP	+\$90	HDT	\$109
					39cm

NOTES: Pure NZ bull. Ideal for heifers. From a R14yr Waitawheta cow sold to embryo. T216 a twin, but still 232kg at weaning. Massive EMA EBV of 8.1.- figures are very good.



PURCHASER PRICE

BREED AVE. EBV'S FOR 2022 BORN CALVES									
Dir	Dtrs	GL	BW	200D	400D	600D	MCWt	Milk	SS
+1.5	+1.0	-4.0	+4.3	+42	+78	+101	+91	+14	+2.0
DC	Cwt	EMA	RIB	RUMP	RBY	IMF	SR	AP	HDT
-4.2	+48	+3.2	+1.1	+1.1	+0.4	+0.9	+\$113	+\$112	+\$105

LOT 13 | OKAKA BIG LAD T228

Born: 07/09/22

ID: 21242022T228

PUKE-NUI 12/333 ^{SV}

KAHARAU 09-265
PUKE-NUI 84

S: OKAKA BIG BOY R27 ^{SV}

ALPINE LEGACY 827 ^{SV}

TANGIHAU 0935
ALPINE LEGACY 634

RESURGAM NGAHERE U407

PINEBANK WAIGROUP 41 /97
RESURGAM SOUVENIR S253 (ET)

D: OKAKA SHARPE R6 PV

WAITAWHETA L71 PV

KENHARDT F920
WAITAWHETA H81 ^{SV}

May 2024 TransTasman Angus Cattle Evaluation					
Dir	DTRS	GL	BW	MILK	
-1.9	-4.0	-0.3	+4.7	-2	
62%	52%	80%	80%	71%	
200D	400D	600D	MCWt	SS	DC
+25	+54	+56	+70	+1.2	-3.6
81%	79%	80%	75%	77%	40%
CWT	EMA	Rib	RUMP	RBV	IMF
+15	+0.1	+1.0	+1.4	+0.6	+1.0
68%	67%	68%	69%	60%	72%
INDEX					Actual Scrotal size
SR	+\$119	AP	+\$57	HDT	+\$71
					38cm

NOTES: First sale bull from homebred Big Boy Junior. A heifers calf, that has held his own amongst bigger bulls. Strong Waitawheta dam line, grand dam L71 only 530kg and is dam of next lot. Weaned 243kg.



PURCHASER PRICE

BREED AVE. EBV'S FOR 2022 BORN CALVES									
Dir	Dtrs	GL	BW	200D	400D	600D	MCWt	Milk	SS
+1.5	+1.0	-4.0	+4.3	+42	+78	+101	+91	+14	+2.0
DC	Cwt	EMA	RIB	RUMP	RBV	IMF	SR	AP	HDT
-4.2	+48	+3.2	+1.1	+1.1	+0.4	+0.9	+\$113	+\$112	+\$105

LOT 14 | OKAKA FALLOON T219
PV

Born: 27/08/22
ID: 21242022T219

PINEBANK 109/16 ^{SV}
GLANWORTH WAIGROUP 14163
PINEBANK 112/13

S: PINEBANK P80
PV

PINEBANK 163/14
 PINEBANK 97/11
PINEBANK 7/08

KENHARDT F920
 CAPTAIN 657 OF KENHARDT
W530 OF KENHARDT

D: WAITAWHETA L71
PV

WAITAWHETA H81 ^{SV}
WAITAWHETA C20
WAITAWHETA C35

May 2024 TransTasman Angus Cattle Evaluation					
Dir	DTRS	GL	BW	MILK	
+0.5	-0.7	-4.2	+7.3	+8	
65%	55%	81%	82%	73%	
200D	400D	600D	MCWt	SS	DC
+27	+60	+74	+73	+2.1	-3.1
83%	81%	82%	78%	79%	44%
CWT	EMA	Rib	RUMP	RBV	IMF
+24	+1.1	+0.2	-1.0	+1.8	-2.2
71%	70%	71%	71%	64%	74%
INDEX					Actual Scrotal size
SR	+\$98	AP	+\$38	HDT	+\$89
					40cm

NOTES: Used pure NZ bull. Waitawheta L71 (7/7), 530kg cow who boxes above her weight. Has grown out really well. Good muscling and structure. Not for heifers. Weaned 285kg.



PURCHASER PRICE

BREED AVE. EBV'S FOR 2022 BORN CALVES									
Dir	Dtrs	GL	BW	200D	400D	600D	MCWt	Milk	SS
+1.5	+1.0	-4.0	+4.3	+42	+78	+101	+91	+14	+2.0
DC	Cwt	EMA	RIB	RUMP	RBV	IMF	SR	AP	HDT
-4.2	+48	+3.2	+1.1	+1.1	+0.4	+0.9	+\$113	+\$112	+\$105

LOT 15 | OKAKA BIG BOY T252

Born: 20/09/22

ID: 21242022T252

KAHARAU 09-265

KAHARAU 05-61
KAHARAU 06-7996

S: PUKE-NUI 12/333 ^{SV}

PUKE-NUI 84

WAIMATA IMPACT E265
WAIMATA L1265

TURIHAUA H34 (ET)

WAIMATA D128
TURIHAUA X131

D: RED OAK 15428

RED OAK 12752

TE MANIA 09 580
RED OAK 10

May 2024 TransTasman Angus Cattle Evaluation					
Dir	DTRS	GL	BW	MILK	
+8.7	+7.0	-7.8	+1.3	+5	
63%	52%	80%	82%	71%	
200D	400D	600D	MCWt	SS	DC
+28	+57	+69	+77	-0.1	-4.4
82%	80%	81%	77%	78%	42%
CWT	EMA	Rib	RUMP	RBY	IMF
+31	-2.0	+2.0	+1.5	-0.1	+1.1
69%	68%	69%	69%	61%	73%
INDEX					Actual Scrotal size
SR	+\$110	AP	+\$93	HDT	+\$119
					38cm

NOTES: Used over heifers. A Big boy son who, like his sire, looked good from day 1. High libido, ideal for heifers. Red Oak dam R9 and still going and produced 3 sale bulls. Weaned 276kg.



PURCHASER PRICE

BREED AVE. EBV'S FOR 2022 BORN CALVES									
Dir	Dtrs	GL	BW	200D	400D	600D	MCWt	Milk	SS
+1.5	+1.0	-4.0	+4.3	+42	+78	+101	+91	+14	+2.0
DC	Cwt	EMA	RIB	RUMP	RBY	IMF	SR	AP	HDT
-4.2	+48	+3.2	+1.1	+1.1	+0.4	+0.9	+\$113	+\$112	+\$105

LOT 16 | OKAKA RANGATIRA T202
PV

Born: 08/08/22

ID: 21242022T202

RANGATIRA 16209 ^{SV}

RANGATIRA COMMODORE 13-19
 KAHARAU 09-8703

S: MEADOWSLEA Q347
PV

MEADOWSLEA K944 ^{SV}

TURIHAUA CRUMP E5 (ET) ^{SV}
 MEADOWSLEA C905

RATANUI LAD 21

TURIHAUA CRUMBLE Y167
 RATANUI 06 666

D: MEADOWSLEA L274
SV

MEADOWSLEA F536

MEADOWSLEA D098
 MEADOWSLEA D258

May 2024 TransTasman Angus Cattle Evaluation					
Dir	DTRS	GL	BW	MILK	
+3.2	+0.3	-5.6	+2.0	+15	
62%	51%	81%	81%	71%	
200D	400D	600D	MCWt	SS	DC
+17	+40	+44	+47	+2.3	-4.1
82%	80%	81%	76%	78%	43%
CWT	EMA	Rib	RUMP	RBV	IMF
-12	+6.1	+2.7	+2.3	+0.8	+0.6
69%	68%	68%	69%	61%	72%
INDEX					Actual Scrotal size
SR	+\$92	AP	+\$45	HDT	+\$89
					40cm

NOTES: Used over heifers. Second Meadowslea Q347 son, from one of our best cows Meadowslea L274 (7/7) who was bought in 1st Meadowslea cow sale as a heifer. Ideal for heifers with a balanced EBV. Weaned 280kg.



PURCHASER PRICE

BREED AVE. EBV'S FOR 2022 BORN CALVES									
Dir	Dtrs	GL	BW	200D	400D	600D	MCWt	Milk	SS
+1.5	+1.0	-4.0	+4.3	+42	+78	+101	+91	+14	+2.0
DC	Cwt	EMA	RIB	RUMP	RBV	IMF	SR	AP	HDT
-4.2	+48	+3.2	+1.1	+1.1	+0.4	+0.9	+\$113	+\$112	+\$105

LOT 17 | OKAKA RESURGENCE 2220
DV

Born: 16/10/22
ID: 2124202220

RESURGAM BLU-PRINT Y813 ^{SV}
 RESURGAM BLU-PRINT T368
 RESURGAM MANDY U408 (ET)

S: RESURGAM BLU-PRINT F3180
^{SV}

RESURGAM JULIE ERICA B2294
 RESURGAM NGAHERE U407
 RESURGAM JULIE ERICA U450 ^{SV}

WAITAWHETA F68
 KAURE 102/8+
 WAITAWHETA Y60

D: WAITAWHETA H94
^{SV}

WAITAWHETA F151
 PINEBANK 50/08
 WAITAWHETA D125

May 2024 TransTasman Angus Cattle Evaluation					
Dir	DTRS	GL	BW	MILK	
+5.5	+0.6	-1.4	+2.1	+17	
63%	53%	80%	81%	71%	
200D	400D	600D	MCWt	SS	DC
+15	+47	+53	+51	-0.4	-4.0
82%	80%	80%	77%	77%	41%
CWT	EMA	Rib	RUMP	RBY	IMF
+7	-0.6	+0.6	+0.4	+1.2	+0.5
69%	67%	68%	69%	61%	73%
INDEX					Actual Scrotal size
SR	+\$91	AP	+\$40	HDT	+\$103
					38cm

NOTES: Pure NZ bull. Another ideal bull for heifers. Moderate Waitawheta H94 dam (10/10) was my first stud cow bought and had 3 bulls to sale. Resurgam F3180 may not be big but really does put meat into his progeny. Weaned 229kg.



PURCHASER PRICE

BREED AVE. EBV'S FOR 2022 BORN CALVES										
Dir	Dtrs	GL	BW	200D	400D	600D	MCWt	Milk	SS	
+1.5	+1.0	-4.0	+4.3	+42	+78	+101	+91	+14	+2.0	
DC	Cwt	EMA	RIB	RUMP	RBY	IMF	SR	AP	HDT	
-4.2	+48	+3.2	+1.1	+1.1	+0.4	+0.9	+\$113	+\$112	+\$105	

**Future
Producers**



What you put in today will pay dividends tomorrow.

**Ensure your stock become future high producers
through improved health, growth and energy.
Talk to your local territory manager about health
management for maximum results.**



**Boehringer
Ingelheim**

futureproducers.co.nz

Livestock Team

DAVID COULTER | 027 499-5223
Business Segment Manager

PAUL McKEE | 027 449-8441
Northern North Island

DAN GARDNER | 027 226-1440
Southern North Island

STEVE ROONEY | 027 432-1789
Northern South Island

HAMISH McKENZIE | 027 435-8645
Southern South Island

PROUDLY AVAILABLE FROM YOUR LOCAL PARTICIPATING VETERINARY CLINIC

See product labels for full claim details
and directions for use. ECLIPSE® &
MARKS-MIN® are registered trademarks
of the Boehringer Ingelheim Group.
Registered pursuant to the ACVM
Act 1997, Nos. A011151, A011687.
©Copyright 2023 Boehringer
Ingelheim Animal Health
New Zealand Ltd.
All rights reserved.
NZ-BOV-0008-2023.

COULD YOUR BULL FILL THIS SPACE?

Win a photoshoot and advertorial for 2025

We know your prize bull is worth putting front and centre, so enter the draw to win an interview, professional photoshoot and full-page advertorial just for your stud! Be an FMG client (or receive a valid FMG quote) and complete our short survey, and we'll put you in the draw!



Enter at fmg.co.nz/advertorial or scan the QR code*

For more information about FMG Premier Bull Sales Insurance talk to your FMG

Rural Manager and check our Purchaser Instruction and Insurance Slip.

*Terms and conditions apply

We're here for the good of the country.



FMG
Advice & Insurance

FMG Premier Bull Sale Insurance

What is FMG Premier Bull Insurance?

FMG provides automatic insurance for all bulls auctioned at an FMG Premier Bull Sale up to the value of \$50,000 for 14 days at no cost to the purchaser. For any bull purchased over \$50,000 talk to an FMG representative.

What is the length of cover?

You will automatically be insured for the specified bull for 14 days. You also have the option to extend the length of insurance to 12 months. Simply tick the “Extend your Premier Bull Insurance” option on the Purchaser Slip. The specified bull is then insured for the remaining period of 12 months at **7.6%** of the purchase price (the sum insured for the bull). If you would like to discuss an alternative timeframe, please have a chat with your local FMG representative.

You don't have to pay today, FMG will invoice you for this additional cover.



What are the benefits?

✓ *Infertility*

Cover if your specified bull has to be euthanised due to permanent infertility caused by certain accidents, disease, or illness.

✓ *Theft or death*

We cover your specified bull for theft or death caused by certain accidents, disease, injury, or illness (including while in transit anywhere in New Zealand).

✓ *Vet costs*

We cover up to \$500 for treatment of your specified bull to prevent death.

What will FMG pay?

FMG will pay the fair market value of your specified bull, less any amount you receive for the sale of the carcass, up to the amount shown on the insurance certificate.



Bull Purchaser Instruction and FMG Insurance Slip



Please complete this slip and hand to the Booking Clerk before leaving the sale. This slip **MUST** be fully completed to be eligible for the 14 days free Premier Bull Insurance.

Purchaser/Agent full name:	If purchasing on behalf of, what is your relationship to owner?		Buyer No:
FMG Client Account Number:	Purchaser's full name:		Purchaser's DOB: / /
Purchaser's email:	Purchaser's phone:		
Purchaser's postal address:	Farm/business name:		NAIT No.:
Delivery address:	Post code:		
	Stock firm to be charged:		

Lot:	Tag:	\$	Breed:	DOB:

Transport instructions:

Stock firm to be charged:

Period of FMG Insurance

Tick here to extend your Bull Insurance to 12 months @ 7.6% of the purchase price of your bull. This will extend the cover beyond the initial 14 days free cover for the remaining period of 12 months.

If you do not wish to be contacted by FMG in the future to discuss other products and services please tick here:

I acknowledge and agree for my personal information contained in this Purchaser Instruction and Insurance Slip to be shared between the parties involved in this bull sale, including but not limited to the vendor or their representatives, livestock agencies, transport operators and FMG. The information is shared for the purpose of completing the sale and purchase of the bull, including insurance with FMG.

NO VERBAL INSTRUCTIONS
WILL BE ACCEPTED

Signature of Purchaser or Agent:

Date: / /

Disclaimer

Please note this is only a summary of the product and is subject to our specific product documentation. For full details, you should refer to the policy document. You can get these documents, and any other information you need, from your FMG representative, by calling us or visiting, fmg.co.nz/ivestockpolicy



Call us on
0800 366 111



Visit our website
fmg.co.nz





Bred on Taihape steep hill country

Includes pure New Zealand genetics

Paul & Susannah Revell

361 Okaka Road, RD1 Taihape 4791

E: paulandsus@inspire.net.nz

Ph: 06 388 7519  Okaka Angus

